

Leading Manufacturer of
Hydraulic Press
SUNG KWANG
SUNG KWANG ENGINEERING & MANUFACTURING CO., LTD



SKEM

SUNG KWANG ENGINEERING & MANUFACTURING CO., LTD

www.skpress.com

1공장 (The Head office and 1st factory)

47, Yongdeok-Ro 302beon-Gil, Hallim-Myeon,
Gimhae-City, Gyeongsangnam-Do, Korea
Tel. +82-55-338-4252~5 / Fax. +82-55-338-4256
E-mail. sk9800@chol.com / chash@skpress.com

2공장 (The 2nd factory)

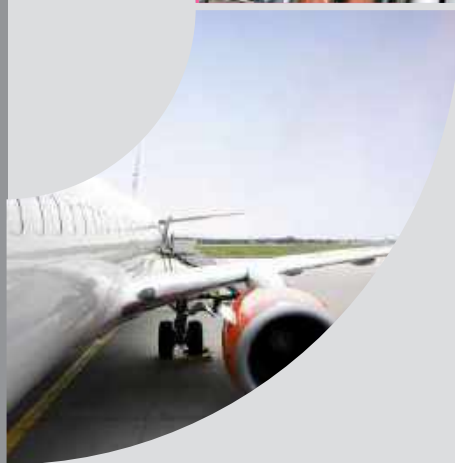
92, Yongdeok-Ro 302beon-Gil, Hallim-Myeon,
Gimhae-City, Gyeongsangnam-Do, Korea
Tel. +82-55-723-3015 / Fax. +82-55-723-3016

Aiming for the world's best
hydraulic press technology...

CONTENTS



Greetings	02 ~ 03
History / Customers	04
Certificate	05
01. Butt Welded Pipe Fitting Manufacturing Machineries	
1) Hydro-Forming Press	06 ~ 07
2) Elbow Mandrel Bending & Sizing Press	08 ~ 09
3) Elbow Cold Bending Press	10 ~ 11
4) Metal-Forming Press	12 ~ 15
5) Pipe & Fitting End Calibration Press	16
6) Pipe & Fitting End Beveling Machine	17
02. Pipe Manufacturing Plant	
1) Edge Pre-Bending Press & Jco Pipe Bending Press	18 ~ 19
2) Tack Welding Machine	20
Hydrostatic Testing Machine	
In/Out Welding Machine	
3) Pipe Expansion Plant	21
03. Deep Drawing Press & Forging Press	22 ~ 23
04. Automotive Parts Hydraulic Press	24 ~ 25
05. Shipbuilding & Heavy Duty Plant Hydraulic Bending Press	26 ~ 27
06. Ultra-High Pressure Hydraulic Press	28 ~ 29
07. Rubber Molding & Lamination Hot Press	30 ~ 31
08. R & D CENTER	32 ~ 34
Basic Specification Requirement for Quotation	35



GREETINGS

㈜ 성광기연은 한국 내에서 초대형 유압프레스 제작에 전문화된 기업입니다.
 – 초대형, 초고압, 초정밀 유압 프레스
 – 초고압 프레스를 위한 전문화된 유압 시스템(over 4000kg/cm²)
 – 파이프 피팅류 및 강철 파이프 장비 제작공장(JCO, ROLL, Expansion, etc).

유압 프레스는 파이프 피팅류, 강철판 벤딩, 금속 작업, 딥 드로잉, 열간 및 냉간 단조에 의해 송유관, 석유화학, 연안 석유생산 및 선박제작등과 같은 다양한 산업에 사용됩니다.

유압 프레스 제작에 30여년 이상의 제작 경험을 보유하고 있으며 결과적으로 축적된 기술, 서비스 및 노하우는 모든 현재 및 미래 잠재적 고객사들에 대한 당사의 긍지입니다.

We, **Sung Kwang Eng & Mfg Co., Ltd. (SKEM)** are a specialized Hydraulic Press manufacturer in Korea,
 - Ultra Large, Ultra High Pressure, Ultra Precise Hydraulic Presses
 - Specialized Hydraulic Systems for ultra high pressure generation (over 4000kg/cm²)
 - Pipe Fitting, Steel Pipe Manufacturing Plant.(JCO, Roll, Expansion, etc)
 Our Hydraulic Presses are used in various industries such as Piping, Petrochemical, On & Offshore Oil Production, Shipbuilding, etc. by Pipe Fittings, Steel Plate Bending, Metal Working, Deep Drawing, Hot&Cold Forming and Forging.

We have 30 years of manufacturing experience of those Hydraulic Press and the consequentially accumulated technology is our pride as well as our service to all current and future Customers.



▶ The 1st factory



▶ The 2nd factory

HISTORY

- 1990 Start manufacturing hydraulic press (Started manufacturing hydraulic press)
- 2001 Establish Sung Kwang Eng & Mfg Co.,Ltd. as legal entity
(Established Sung Kwang Eng & Mfg Co.,Ltd. as legal entity)
Design and Develop 15,000ton ultra high pressure hydro forming press
(Designed and Developed 15,000-tonne ultra-high pressure hydro forming press)
- 2003 Designed and developed of hydroforming ultra-high pressure press for copper pipes
- 2004 Obtained ISO 9001 / ISO 14001
- 2005 Designed and developed 20,000-tonne ultra-high pressure hydro forming press
- 2006 Designated as venture business
Established research and development team
Developed 50,000-tonne ultra-high pressure hydraulic press
- 2007 Obtained patent for hydroforming combination valve
Obtained Inno-Biz confirmation, certified by Ministry of SMEs and Startups
Registered a patent for ultra-high pressure oil booster
Registered a patent for hydroforming press
Completed a new factory at the current location
Delivered CNC roll bending press (2,200-tonne * 20m)
- 2008 Established SKEM Technology Institute as a legal entity
Designated as a Promising Export Enterprise by Ministry of SMEs and Startups
Designated as a Domestic Technology Development Enterprise
Delivered CNC roll bending press (2,000-tonne * 20m)
CEO named as "Proud CEO of Gimhae City"
- 2009 Completed government sponsored R&D task
- 2010 Exported hydraulic press for automobile parts to Japan
- 2011 Developed 5,000-tonne bending & pipe forming press
- 2012 Won the Best SME of Gyeongsangnam-do Award
Received the "5 Million US Dollar Export Tower" Award
- 2013 Exported press for mechanical fitting to Russia
- 2014 Built 2nd manufacturing facility
Registered for a patent of parts forming device using hydraulic cylinder
- 2015 Won the bidding for 12,000-tonne JCO Pipe forming press line
Received the "10 Million US Dollar Export Tower" Award and the Presidential Award
- 2016 Completed JCO pipe plant
Selected as a Root-Technology Specialty Enterprise by KPIC
(Korean Root Technology Industry Center)
Received a Certification for Specialized Materials and Component Enterprise
by Ministry of Trade, Industry and Energy

CUSTOMERS



CERTIFICATE

- International Standardization Organization (ISO)
- Welding Procedure Specification Certification (ABS, LR)



- Certification etc.



1) HYDRO-FORMING PRESS (TEE COLD FORMING PRESS)

Hydro-Forming 공법은 파이프 배관용 관이음쇠의 한종류인 TEE와 CROSS등의 생산에 적용되며, 원소재가 되는 파이프 속에 초고압의 액압을 가하여 원하는 제품의 형상으로 성형 가공하는 고압 액압 성형 유압프레스입니다. 고압의 액압으로 성형하므로 제품 내부의 표면 손상이 없고 2차가공이 쉽습니다. CNC 기능을 탑재하여 다양한 제어를 할 수 있으므로 생산부품의 경량화, 강성증가, 제조공정 및 부품수 감소, 공정절감 등 다양한 장점이 있으며 자동차 부품 및 조선, 항공용 부품 산업, 산업용 부품소재 산업, 화학플랜트 등의 제품 생산용으로 적합합니다.

Hydroforming process used in a hydraulic press which applies ultra-high hydraulic pressure inside a regular pipe to manufacture pipe fittings of desired shapes, such as Tee and Cross fittings. By utilizing highly pressurized fluid to shape materials, it leaves no damage to the surface, and the secondary processing becomes easier. With integrated CNC functionality, which allows more control over the device, this press has various advantages such as reduced weight and the increased rigidity of manufactured parts, reduction of the manufacturing process and required parts. The press is suitable for the production of automobile parts, shipbuilding, the aviation parts industry, industrial parts material industry, and chemical plants as well.

- Manufacturable Range: 500~50,000Ton
(Productible Size: 50A~1,220A)



20,000TON TEE HYDRO-FORMING PRESS



20,000TON TEE HYDRO-FORMING PRESS



20,000TON TEE HYDRO-FORMING PRESS



15,000TON TEE HYDRO-FORMING PRESS



1,800TON TEE HYDRO-FORMING PRESS

2) ELBOW MANDREL BENDING & SIZING PRESS (HOT FORMING)

고도화된 산업에서 가장 많이 사용되고 있는 용접배관용 관이음쇠의 한종류인 Elbow의 생산에 적용되며, 카본스틸이나 합금강 등의 두꺼운 소재를 열간으로 벤딩 하는데 적합한 설비입니다. 원소재가 되는 파이프에 직접 열을 가하여 맨드렐을 통과하면서 90°~180°벤딩 가공하는 기계입니다. 소재의 투입이나 생산제품 인출이 자동화되어 편리하며 금형의 교체가 쉽습니다. 제품 벤딩후 바로 Sizing Press에서 교정 작업을 할 수 있습니다. Induction Heating Type과 Gas Heating Type의 2종류가 있습니다. Oil & Gas Pipe Line, 석유화학 공업, 선박 및 해양플랜트, 발전설비 등에 사용되는 제품 생산에 적합합니다.

-Manufacturable Range: 200~2,000Ton



3,500TON SIZING PRESS



400TON HOT FORMING PRESS
(INDUCTION TYPE)



500TON HOT FORMING PRESS
(GAS FURNACE TYPE)



ELBOW MANDREL



1200TON HOT FORMING PRESS (INDUCTION TYPE)



1,000TON HOT FORMING PRESS (INDUCTION TYPE)



This machine is used to produce elbow pipe fittings for welded piping, which is used widely in the highly-developed industry. This press, suitable in bending thick materials such as carbon steels or alloy steels, passes an original pipe through mandrel while applying the heat directly to shape the pipe with 90 degree to 180-degree bends. Feeding the original material and collecting manufactured parts are automated, making the operation of the machine more convenient, and replacing molds easier. Immediately following after bending the original pipe into the desired shape, sizing press can calibrate and correct the size immediately. There are two types available—induction heating type and gas heating type. It is suitable for the production of products used in Oil & Gas Pipe Line, petrochemical industry, ship and offshore plant, power generation facilities.



3) ELBOW COLD BENDING PRESS

열간 벤딩을 할 수 없는 특수 파이프 소재류의 냉간 벤딩용 기계입니다.
스테인레스 스틸이나 듀플렉스, 동,알루미늄같은 특수소재의 제품생산에 적합한 유압프레스입니다.
원소재가 되는 파이프를 상온에서 금형속의 Mandrel에 제품을 밀어넣어 냉간벤딩 하는 유압프레스 입니다.
수직형과 수평형이 있으며 생산조건에 맞게 선택 가능합니다.

-Manufacturable Range: 200~5,000Ton



200-100TON ELBOW BENDING PRESS



1,000-500TON COLD ELBOW BENDING PRESS (HORIZONTAL TYPE)



MANDREL

This is a bending press for special pipe materials that cannot be processed with hot bending machines.
A hydraulic press is suitable for the production of special materials such as stainless steel, duplex, copper, and aluminum.
It is a hydraulic press that cold bends a pipe which is a raw material by pushing the product to a mandrel in a mold at room temperature. Depending on your operating conditions, both vertical and horizontal types are available.



300TON COLD BENDING PRESS



400TON COLD BENDING PRESS



800TON & 250TON COLD BENDING PRESS (VERTICAL TYPE)

4) METAL-FORMING PRESS (HOT & COLD FORMING)

고객사의 생산공정 특징에 따라 Hot forming process, Cold forming process, Deep Drawing process 등의 여러공법에 따라 다양하게 적용하여 제품을 생산할 수 있도록 구성되어 있습니다.

프레스와 가열로를 같이 배치하여 열간성형작업에 신속히 대응 할 수 있습니다.

fitting류 제조산업 및 발전, 조선 및 해양플랜트, 석유 및 가스 산업등의 여러 중공업에서 사용되는 아주 두껍고 직경이 큰 대형 배관용 관이음쇠 제작이나 열간 단조작업등에 적절한 유압 프레스입니다. 무빙볼스타를 적용하여 고온, 고중량의 소재와 금형을 쉽고 빠르게 장착 가능 합니다.

A metal-forming press can be modified to suit the needs of our customers by handling various manufacturing processes, such as a hot forming process, a cold forming process, and a deep drawing process.

By arranging the press and heating furnace together, you can respond quickly to the hot forming operation.

It is the most suitable press for hot forging operations or manufacturing large and thick pipe fittings for heavy industrial applications such as a plant pipe fitting industry, power plants, shipbuilding, offshore plants, and an oil & gas industry.

This press is equipped with moving bolsters to make installation of heavy materials and molds easy and fast.

-Manufacturable Range: 500~20,000Ton



9,500TON & 5,200TON TRIPLE ACTION HYDRAULIC PRESS



5,000TON METAL FORMING PRESS



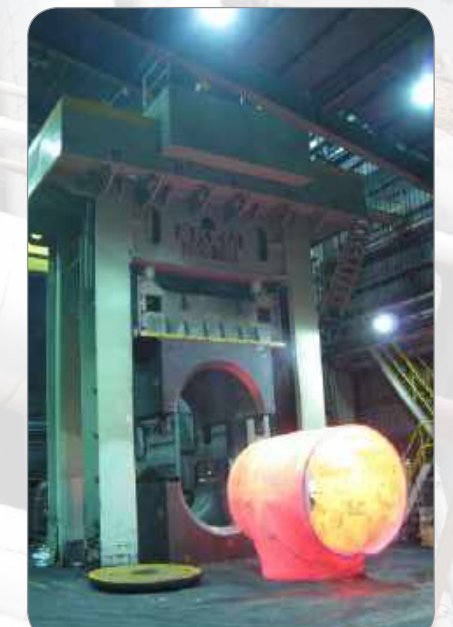
LOCAL HEATING DEVICE & PULL PRESS



6,000TON DOUBLE ACTION PRESS



7,000TON PRESS



6,000TON HOT FORMING PRESS

4) METAL-FORMING PRESS (HOT & COLD FORMING)

고객사의 생산공정 특징에 따라 Hot forming process, Cold forming process, Deep Drawing process 등의 여러공법에 따라 다양하게 적용하여 제품을 생산할 수 있도록 구성되어 있습니다. 프레스와 가열로를 같이 배치하여 열간성형작업에 신속히 대응할 수 있습니다. fitting류 제조산업 및 발전, 조선 및 해양플랜트, 석유 및 가스 산업등의 여러 중공업에서 사용되는 아주 두껍고 직경이 큰 대형 배관용 관이음쇠 제작이나 열간 단조작업등에 적절한 유압 프레스입니다. 무빙볼스터를 적용하여 고온, 고중량의 소재와 금형을 쉽고 빠르게 장착 가능 합니다.

-Manufacturable Range: 500~20,000Ton



7,000-2,500TON PRESS & HEATING FURNACE



6,000TON HOT FORMING PRESS



6,000TON METAL FORMING PRESS



2,500TON ELBOW BENDING PRESS



2,500-1500TON SIZING PRESS

A metal-forming press can be modified to suit the needs of our customers by handling various manufacturing processes, such as a hot forming process, a cold forming process, and a deep drawing process. By arranging the press and heating furnace together, you can respond quickly to the hot forming operation. It is the most suitable press for hot forging operations or manufacturing large and thick pipe fittings for heavy industrial applications such as a plant pipe fitting industry, power plants, shipbuilding, offshore plants, and an oil & gas industry. This press is equipped with moving bolsters to make installation of heavy materials and molds easy and fast.

5) PIPE & FITTING END CALIBRATION PRESS

Calibration press는 여러 산업에 사용되는 파이프 및 파이프 피팅의 끝단부를 교정하는 프레스로서, 파이프와 파이프를 연결하는 제조과정에서 파이프 끝단부를 베벨링 가공하기전에 동심도와 진원도를 맞추기 위하여 필수적인 공정인 만큼 특히, 내경과 외경을 따로 교정해야 하던 기존 장비와는 달리 내외경을 동시에 교정하도록 개발하여 제품 교정에 드는 시간과 원가절감의 효과를 극대화 하였습니다. 국부교정용, 전체 교정용, 대구경, 소구경등의 선택에 맞게 제작 가능 합니다. 두꺼운 소재의 진원교정을 할수있도록 INDUCTION HEATING SYSTEM을 설치하여 쉽게 교정작업을 할 수 있습니다.

As a required process, a calibration process is widely used to calibrate the ends of pipes and pipe fittings, prior to the beveling process during the assembling of pipes, to match concentricity and roundness of the each ends of the components. Our calibration press can calibrate both the inner and outer radius of a pipe simultaneously, unlike the predecessor, which only offered calibration of one side at a time, improving calibration time and material costs. The press can be manufactured to meet your needs for local & full calibration, large & small calibers, and more. By installing induction heating system, calibrating the concentricity of thicker materials can easily be achieved.

- Manufacturable Range: 1,000~10,000Ton
- Productible Size: 300A ~ 1,500A



3,000TON CALIBRATION PRESS (INDUCTION HEATING TYPE)



FITTING END CALIBRATION PRESS



1,500TON CALIBRATION PRESS (INDUCTION HEATING TYPE)

6) PIPE & FITTING END BEVELLING MACHINE (FACING MACHINE)

파이프나 피팅의 교정된 끝단부를 용접하기 위하여 규정된 용접각도로 절삭 가공하는 설비입니다. CNC 기능을 이용하여 각 산업에서 요구하는 표준화된 용접 각도에 맞게 가공하며 절삭조건과 속도 등을 쉽게 바꾸어 작업 할 수 있습니다. 조건에 따라서 Copy Roll Type과 CNC Type이 있으며 절삭툴 또한 1-Head, 2-Head, 3-Head로 선택할 수 있으며 생산성을 높일 수 있는 Turn Table Type은 제품을 동시에 여러개를 장착하여 연속적으로 가공 할 수 있습니다.

This equipment cuts calibrated ends of pipes or fittings at the prescribed angle of the welding joint. By using CNC function, this machine can cut the materials at specific angles of the welding joint, with reference to different industries' standards, while controlling the conditions of the cutting work and speed. Copy Roll Type and CNC Type are available according to the conditions. Cutting tools can also be selected as 1-Head, 2-Head and 3-Head, while selecting the Turn Table Type will increase the number of mounted materials to enable simultaneous processing.

- Manufacturable Range: Pipe Dia: 200A ~ 1,600A



60" CNC BEVELLING MACHINE



36" 2-WAY BEVELLING MACHINE (COPY ROLL TYPE)



1) EDGE PRE-BENDING PRESS & JCO PIPE BENDING PRESS

Edge Milling 되어진 철판을 파이프 벤딩프레스에서 벤딩하기전에 Edge부를 미리 벤딩하는 기계와 Edge부가 프리벤딩 되어진 철판을 순차이동하며(Step by Step) 반복으로 벤딩 하여 두껍고 직경이 큰 파이프를 만드는 BENDING PRESS입니다.

벤딩에 필요한 모든기능은 CNC 기능에 의하여 동작되며 J-C-O순으로 파이프를 만들어 집니다. 강력한 본체의 구조와 강력한 8면 가이드로 벤딩시 발생하는 편심하중에도 정밀도를 유지하는 구조로 설계됩니다. 이 프레스를 이용하여 가공한 여러 두꺼운 파이프의 제품은 송유관을 비롯한 석유시추용, 극지 플랜트용, 석유가스 산업용, 중공업 및 해양플랜트 등의 산업에 사용되는 파이프입니다.

This bending press has two functionalities: it can bend the edges of the edge-milled steel plates prior to being processed in the pipe bending press; it can also manufacture thick pipes with a large diameter by bending thick steel plates in small increments (step by step). All the necessary functionalities to completely bend materials are operated by the CNC feature, shaping the steel plate first into a J shape, then a C shape, and then to an O shape. The powerful body structure and the powerful 8-sided guide are designed to maintain accuracy even when eccentric loads are generated during the bending process. The various thick pipe products processed with this press are used in many industries for various purposes, such as oil pipeline, petroleum pipeline, oil gas industry, heavy industry, and offshore plant.

- Manufacturable Range: $\Phi 400A \sim \Phi 1,800A$ (2,000~20,000Ton)



PIPE BENDING & TACK WELDING LINE



2,500TON PIPE BENDING PRESS



12,000TON PIPE BENDING PRESS



PRE-BENDING MACHINE



TACK WELDING

JCO PIPE MANUFACTURING PROCESS



5,000TON BENDING PRESS



2) TACK WELDING MACHINE / HYDROSTATIC TESTING MACHINE / IN/OUT WELDING MACHINE

JCO Pipe Bending Press에서 파이프 형태로 벤딩된 파이프를 Tack Welding하고 In/Out Welding, Calibration, Hydrostatic test 등의 파이프가 완성되기 위한 모든 공정별 설비를 Line화 하여 소재 투입부터 완성품이 나오는 전과정의 모든 설비를 Turn Key Base로 제작 합니다. 그리고 모든 A/S나 엔지니어링을 One Stop Service가 가능합니다.

We provide a turn-key base solution that streamlines the entire pipe manufacturing process from the material stage to the final product, including in/out welding, calibration, the hydrostatic test, and tack welding the pipe that was processed through the JCO Pipe Bending Press. Also, we offer one-stop engineering and after services.

- Manufacturable Range: $\Phi 400A \sim \Phi 1,800A$



TACK WELDING MACHINE



OUTSIDE WELDING MACHINE



INSIDE WELDING MACHINE



HYDROSTATIC TESTING MACHINE



3) PIPE EXPANSION PLANT

Pipe fitting 산업 및 조선 및 해양 플랜트 산업, 발전설비, 석유시추관련 산업등의 여러 중공업에서 사용되는 Seamless Pipe는 제조 특성상 대구경 Seamless Pipe를 만들기 어려움으로 인하여 소구경의 모관을 이용하여 파이프 확관기에서 대구경 Seamless 파이프를 만들어 사용합니다. 소재투입부터 완성품이 나오는 전과정의 공정별 설비는 JCO PIPE LINE과 비슷하지만 파이프 확관기와 열처리로가 다른점이있습니다. 이모든 Line의 설비들을 Turn Key Base로 제작합니다.

The seamless pipe, widely used in various heavy industries such as such as pipe fitting industry, the shipbuilding and offshore plant industry, a power generation facility, and the oil drilling industry, is difficult to manufacture. Therefore, it is common to use smaller seamless pipe and enlarge the diameter through a pipe expansion plant.

The entire manufacturing process and the machines are similar to that of the JCO Pipe Line, from the feeding the material to the final stage, except the pipe expansion plant and heat treatment furnace. We offer turn-key base solution for this line of production.

- Manufacturable Range: 300A ~ 1,020A



PIPE EXPANDING PROCESS



PIPE EXPANSION MACHINE



3,000TON HYDRAULIC CALIBRATION PRESS
(2WAY OR 4WAY)

03 DEEP DRAWING PRESS & FORGING PRESS

Deep drawing process는 원통, 각통, 원추, 반구형 등과 같은 이음매가 없는 용기(shell)로 성형하는 가공법으로 자동차, 항공기, 가전산업, 고압용기 등의 생산에 많이 사용됩니다. 특히 Double Action Type, Triple Action Type의 특수한 Deep Drawing Press를 제작하고 있으며 Forging Press는 가혹한 조건에서도 고정밀도를 유지할 수 있도록 고강성 프레임과 강력한 8면 가이드를 적용하여 안전하고 정밀한 작업을 할 수 있습니다. 모든 제어기능은 인공지능화 System을 적용하여 제어가 용이합니다.

A deep drawing process is a metal forming processes that manufactures shells without seams in shapes of cylinders, squares, cones, and hemispheres, and is widely used in the production of automobiles, aircraft, home appliances, high-pressure vessels, and so on. We produce special types of drawing presses, such as double action type and triple action type, while the powerful body structure and the powerful 8-sided guide are designed to maintain the accuracy and safety. All control functions are made easier with the artificial intelligence system.

- Manufacturable Range: 200~15,000Ton



1,000-200TON DOUBLE ACTION PRESS



1,000TON DEEP DRAWING PRESS



1,000TON DEEP DRAWING PRESS



1,200TON DEEP DRAWING PRESS



4,000-1200TON DOUBLE ACTION DEEP DRAWING PRESS



7,000-2500TON DOUBLE ACTION DEEP DRAWING PRESS



10,000TON FORGING PRESS



4,000TON FORGING PRESS



3,000TON OPEN DIE FORGING PRESS

각종 자동차 부품의 제조에 사용되는 프레스로서 브레이크 라이닝 & 패드를 연속적으로 생산하는 브레이크 패드 & 라이닝 프레스, 엔진부품을 생산하는 프레스, 각종 자동차용 내장재 성형하는 프레스, 자동차 부품을 성형하는 Hydro-forming press 등이 있습니다.

This press manufactures various automobile parts. This includes equipment such as brake pad & lining presses that continuously produce brake linings & drums, presses that produce engine components, presses for various parts of upholstery, and hydroforming press that manufacture automotive parts.

- Manufacturable Range: 50~10,000Ton



5,000TON PIPE HYDRO FORMING PRESS



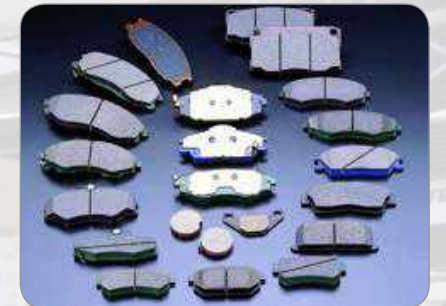
150TON PRE MOLDING PRESS



300TON HOT MOLDING PRESS



500TON HOT MOLDING PRESS



400TON BRAKE PAD & LINING MOLDING PRESS



100TON 2-HEAD PRE MOLDING PRESS



300TON HOT MOLDING PRESS



MOLDING LINE

05 SHIPBUILDING & HEAVY DUTY PLANT HYDRAULIC BENDING PRESS

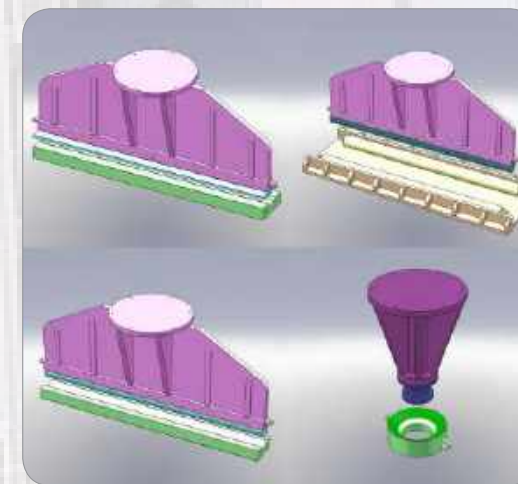
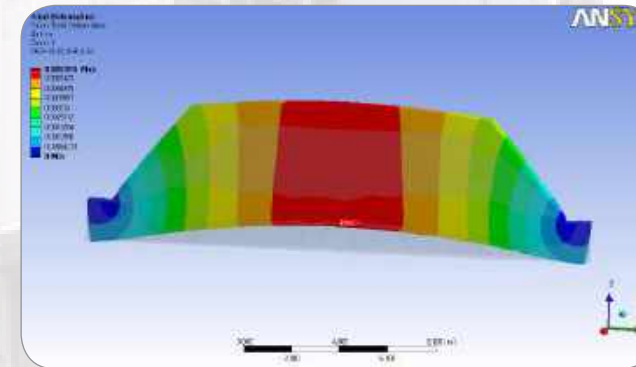
후판이나 프레임 등 Bending process가 어려운 각종 소재를 손쉽게 Bending 할 수있는 프레스입니다.
특히 조선 및 해양 플랜트, 각종 중화학공업, LNG & LPG 저장 탱크, 풍력발전 타워, 항공기동체 제작 등에 많이 사용되는 프레스입니다.
철판 및 각종 형강류의 벤딩작업과 각종 3차원 선형부품의 제조가 가능합니다.

This is suitable press for bending thick plates and frames which are thought to be hard to apply bending process. Especially, it is widely used for various heavy industry applications, such as shipbuilding and offshore plant, heavy chemical industry, LNG & LPG storage tank, wind power tower, and aircraft fuselage. This machine is capable of bending steel plates and beams and manufacturing various kinds of 3-dimensional linear parts.

- Manufacturable Range: 100~15,000Ton



2,200TON/2,000TON CNC ROLL BENDING PRESS



1,200TON PORTAL PRESS



2,200TON x 20M CNC ROLL BENDING PRESS



5,000TON x 18M KNUCKLE BENDING PRESS



1,000TON C-TYPE BENDING PRESS



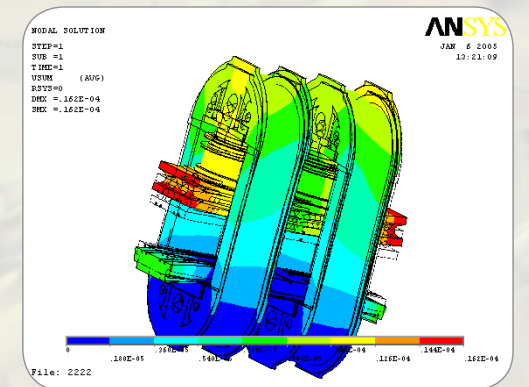
700TON FRAME BENDING PRESS

06 ULTRA-HIGH PRESSURE HYDRAULIC PRESS

초고압 발생장치(500~4000kg/cm²)를 사용한 초고압 유압프레스로서 초강력 강철선을 몸체주위에 감아서 몸체를 아주 소형화 및 강성 프레임으로 만들어서 초고압의 힘으로 세라믹, 다이아몬드 등의 고밀도 제품등의 단위면압이 아주높은 제품성형이나 열교환기의 열판 판재성형에 사용 할 수 있습니다.

This hydraulic press uses ultra-high pressure generator (500~4000kg/cm²).
By wrapping ultra-high strength steel wires around the body to form a small and yet strong frame to apply extreme pressure in a small area to manufacture parts, such as ceramics or diamonds, or heating plate for heat exchangers.

- Manufacturable Range: 10,000~50,000Ton



10,000TON HYDRAULIC PRESS



50,000TON HYDRAULIC PRESS



30,000TON HYDRAULIC PRESS



50,000TON HYDRAULIC PRESS

자동차 부품에서부터 여러 산업용 부품에 이르기까지 널리 적용되는 프레스로서, 각종 트리밍 공정에 사용되는 프레스, 여러 플라스틱 부품생산용 프레스, Dashboard와 같은 자동차 내장재, Rubber sheet, Crawler, 건축자재, 합판, 천정재 등의 생산에 적용되고 있습니다.
특히, 2~10단 또는 그 이상의 다단금형을 적용하여 하나의 pressing process를 통하여 복수의 제품을 생산할 수 있으므로 생산성을 극대화 하였습니다.

It is widely used for the production of a range of automobile and industrial parts. It is used in various trimming processes and for producing various plastic parts, automobile interior materials such as the dashboard, rubber sheets, crawler, building materials, plywood, and so on.
By using two to ten or more multi-step molds, a single pressing process can be used to produce multiple products, maximizing the productivity.

- Manufacturable Range: 100 ~10,000Ton



4,500TON RUBBER SHEET MOLDING PRESS



1,300TON SPONGE VALCANIZER PRESS



RUBBER SHEET MOLDING PRESS



300TON PREFORM PRESS

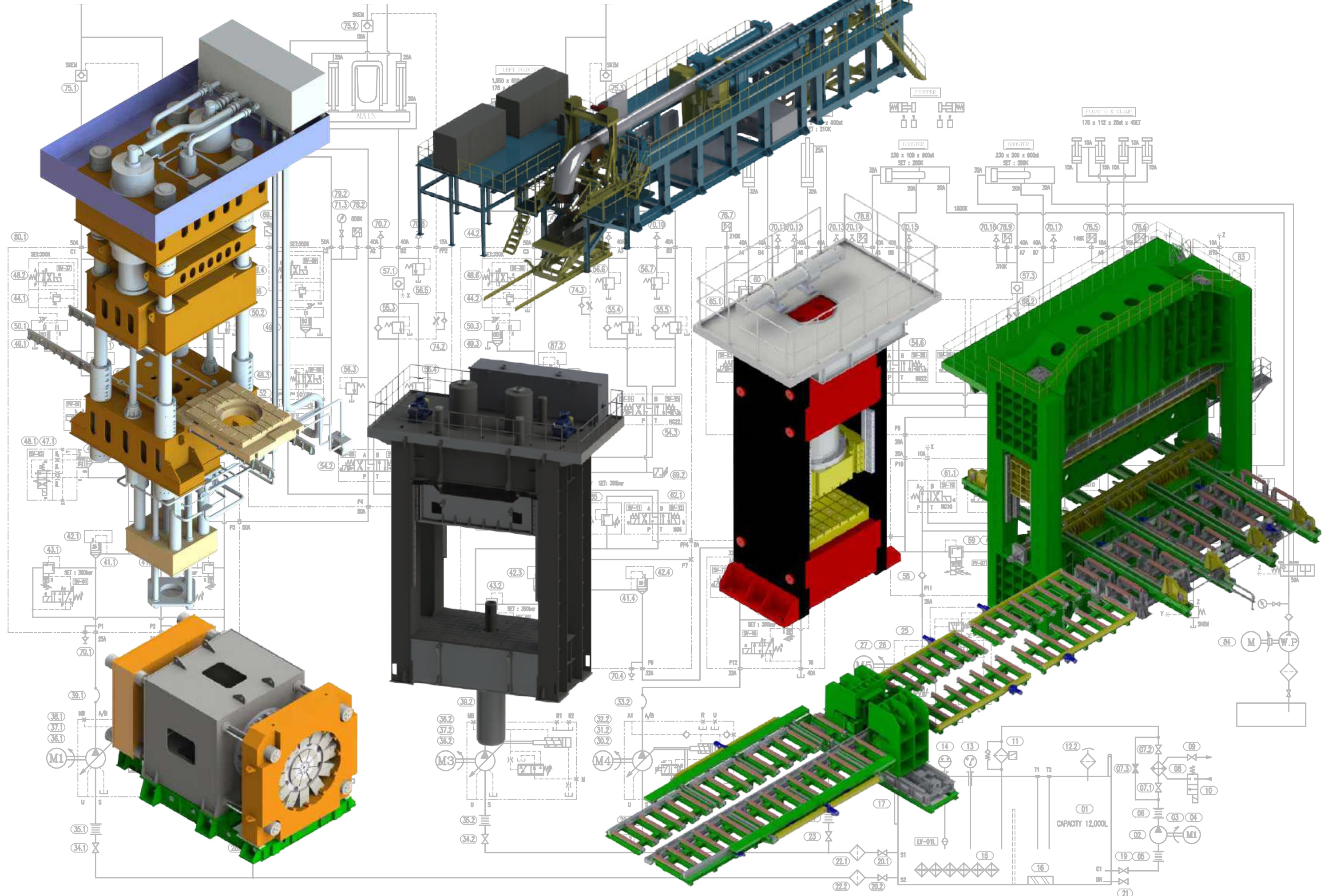


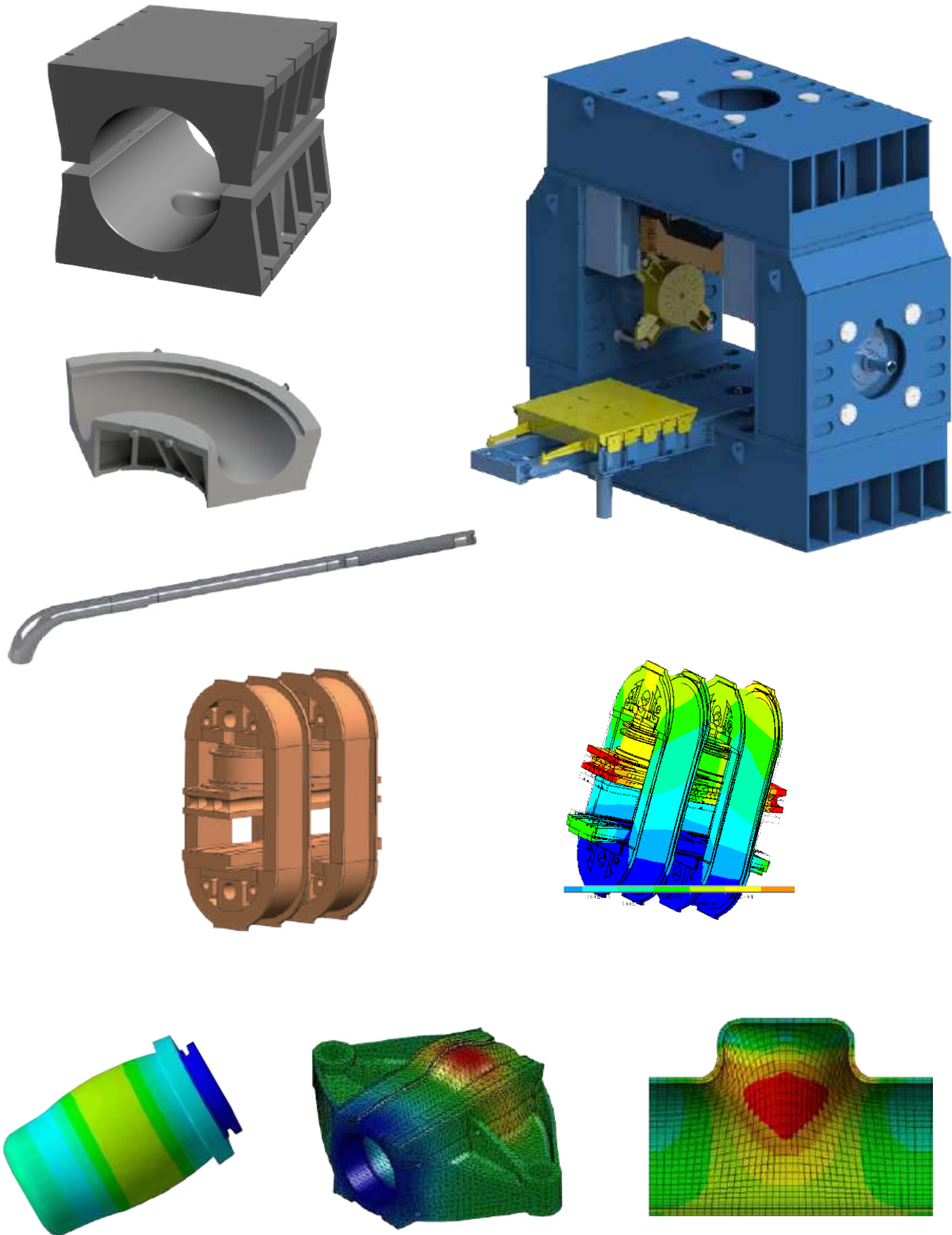
1,920TON HYDRAULIC CRAWLER JOINT PRESS



2,400TON HYDRAULIC CRAWLER HOT PRESS







Basic Specification Requirement for Quotation

- | | | |
|---|-----------------|--------|
| 1. Usage(final products name) : | | |
| 2. Pressing power capacity : | | ton |
| 3. Working table area : | R/L(Right/Left) | mm |
| | F/B(Front/Back) | mm |
| 4. Open height(Day light) : | | mm |
| 5. Cylinder stroke : | | mm |
| 6. Upper stroke type of Down stroke type? : | | |
| 7. Ascending speed : | | mm/sec |
| Descending speed : | | mm/sec |
| Pressing speed : | | mm/sec |
| 8. Auxiliary Equipment : | | |
| (Example : ejector, Moving bolster, Feeder, Rotary table, Die cushion,
Loading & Unloading device, Heating & Cooling, Other equipment) | | |

MEMO